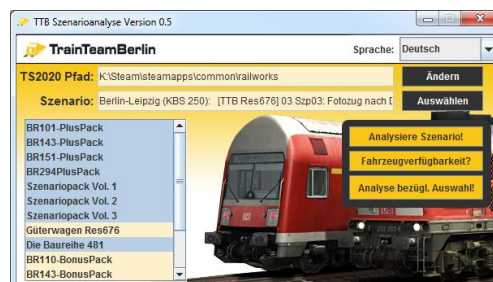




Typ	Railworks - Analysis-Tool
Autor	Benjamin Ebrecht
Version	1.0
Datum	06.11.2019
Kontakt	ebrecht@trainteam.berlin



Vorwort

Dear customer,

after releasing our third scenario pack it becomes more and more a challenge to keep an overview of the vehicle fleet of our addons. TrainTeamBerlin has decided consciously and for good reasons for building and taking care about an integrated vehicle fleet e.g. for not expecting you to have numerous copies of vehicles installed.

But this decision brings a challenge: single vehicles are delivered with different addon combinations what makes it difficult for scenario creators to determine an addon combination that has to be requested for other users. By offering this Scenario Analysis program we are equipping you with a small but powerful tool. It's able to collect and to tightly represent necessary information for the mentioned problem - as well for scenario creators as for its users.

We wish you a lot of pleasure using this program,
TrainTeamBerlin

Installation & System requirements

System requirements: the "Scenario Analysis" is a Java-Tool. For using it, you will need to have installed a "Java Runtime Environment" (JRE) from Oracle:

<https://www.java.com/de/download/manual.jsp>

Installation & Use: Unpack the files contained in the download archive. Start the "Scenario Analysis" by double clicking at the file "startScenarioAnalysis.bat".

Explanation of the program functionality

First program launch: there is no configuration for your system when starting the program for the first time. It will be created automatically. This is why you get the info message: "Unable to preload scenario folder: using placeholder data". This is normal and just an information as preloading scenarios is a program standard later on. For later starts the following parameters will be restored automatically based on your last choices:

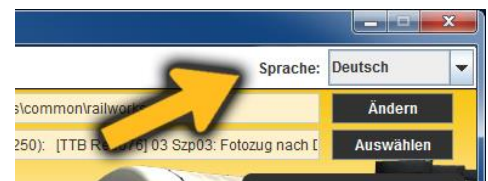
- Language
- TrainSimulator directory
- Selected scenario

Main window: the main window contains all relevant functions:

- Language choice
- Setting the path of Train Simulator
- Selecting Scenarios
- Choice of addon combination for which a playability of a scenario has to be checked
- Particular buttons for scenario analysis

Please pay attention to the detailed information on the functionality in the following chapters.

Language choice: The program language can be chosen while program runtime. The choice has effect on the main window and on the report files. It's a generic implementation so that every user is able to add new language files. If you plan to add another translation of the language files: we would be glad if you share the language file with us so that it can be part of the official program download.



Add an own translation:

The language files are located in the folder "language" inside the .jar archive. They are named like *Language_<language>_<COUNTRY>.properties* where:

- language: language abbreviation with 2 or 3 characters taken from IANA Subtag
- COUNTRY: ISO 3166 alpha-2 country code

You can copy an existing language file, name it corresponding to the name scheme and translate the text snippets inside the file. The language file will be recognized automatically when starting the tool next time.

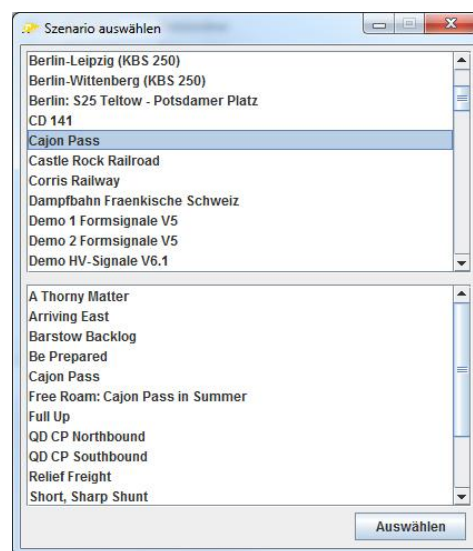


Train Simulator Path: Choose the main directory of Train Simulator by clicking on "change". There is a rudimentary plausibility check - so not every directory can be chosen what's preventing misuse. This selection mechanism enables the use of the Scenario Analysis tool with "Multi-TrainSim" installations, too. The last chosen path will be remembered when re-starting the program.

Scenario selection: Before choosing scenarios, you will have set a valid train simulator path. The choice is done in an extra window that appears after clicking on "Choose" (c.f. screenshot at right hand side). All available routes of this installation are listed automatically. You will get a list of scenarios by clicking on a route name. Choose a scenario from the list and click "Select". Your choice will be displayed in the main window with the scheme

<Streckenname>: <Szenariotitel>

Note: The Scenario Analysis tool recognizes routes with content packed in .ap-archives, too. But scenarios that are packed in .ap-archives are not listed.



Basics of the Scenario Analysis: the Scenario Analysis tool offers different types of report according to the type of analyse. The following applies to all of them:

- The analyse result has to be regarded as snapshot. When installing additional TTB addons or updating installed ones, the results might lose their validity and the analyse might have to be redone. On top the vehicle database delivered with the tool represents a particular state of development and will become obsolete in future. Please inform at www.trainteam.berlin for new program versions. You can expect periodic updates.
- Please pay attention to the fact that the Scenario Analysis just checks for the availability of TTB addon vehicles. Scenarios analysed as "playable concerning TTB vehicles" might be all in all unplayable because of missing third party content.
- The Scenario Analysis has a limited robustness against manual changes on addon data. It can find installed vehicles that are unpacked from the .ap-archives created by the setup routine, too. Manual changes that go further might make the Scenario Analysis not recognizing the vehicle files properly.
- All analyse report are saved as .html file at minimum. Reports on scenario analyses are saved in the scenario folder. Results of the common vehicle availability check will be saved in the program folder. The report files can be opened in your standard browser by clicking on "Ok, show report" after letting the analyse run.

Train Simulator Classic: TTB Scenario-Analysis

Scenario Analyse: This type of users. The selected playability concerning the on this local machine. You selecting a scenario before running the analyse.



of analyse is intended for scenario will be checked for TTB vehicles that are installed don't need to to more than

The report file in .html format contains:

- Common information on route, scenario and its folder
- Summarised short evaluation on playability concerning TTB addon vehicles
- Information on the Scenario Analysis version (that allows conclusions concerning the used vehicle database)
- Detailed information on scenario consists (can be opened): all scenario consists are listed here with id, name and vehicle list. Used TTB addon vehicles are marked: green if installed, red if not.
- Detailed information on used TTB vehicles (can be opened): all TTB addon vehicles used in the scenario are listed tabulary here once. You can find display name, blueprint path and a list stating which addon is delivering which vehicle. The table can be sorted for each column.
- Detailed information TTB vehicles that are not installed (can be opened): all TTB addon vehicles missing in the scenario are listed tabulary here once. You can find display name, blueprint path and a list stating which addon is delivering which vehicle.

Scenario Analyse concerning addon selection: This type of analyse is designed primarily for developer (scenario creators). Besides choosing a scenario, you have to make an addon selection that is done at the lower left of the main window. Selected addons will be supposed to be installed when analysing the scenario. This mode helps by answering the following questions:

- Scenario creators can check which addon requirement combination makes the scenario playable for other players.
- Users can use this type of analyse for checking which additional addons can make a scenario playable that is non-playable the moment.

The report file in .html format contains:

- Common information on route, scenario and its folder
- Summarised short evaluation on playability concerning TTB addon vehicles. This contains a list of the addons that formed the addon combination for which the playability was checked. Pay special attention on the version of each addon!
- Information on the Scenario Analysis version (that allows conclusions concerning the used vehicle database)
- Detailed information on scenario consists (can be opened): all scenario consists are listed here with id, name and vehicle list. Used TTB addon vehicles are marked: green if installed, red if not.
- Detailed information on used TTB vehicles (can be opened): all TTB addon vehicles used in the scenario are listed tabulary here once. You can find display name, blueprint path and a list stating which addon is delivering which vehicle. The table can be sorted for each column.



- Detailed information TTB vehicles that are not installed (can be opened): all TTB add-on vehicles missing in the scenario are listed tabularly here once. You can find display name, blueprint path and a list stating which add-on is delivering which vehicle.

Hint: you need to have installed the latest version of the program to generate robust results! Most TTB add-ons deliver additional content with their add-on updates. This leads to the problem that using outdated vehicle databases of the Scenario Analyse tool might result in wrong or partial results!

Hint: an automatic preselection of an add-on combination is done when starting the Scenario Analysis. Please note that the availability of our Bonus packs cannot be recognized automatically. Always check your choice of add-on combination before starting an analyse!

Common analyse of the vehicle availability: This type of analyse requires just a valid chosen Train Simulator path. It is independent from a scenario selection. An overall check of installed TTB add-on vehicles will be done.

The report file in .html format contains:

- Information on the Scenario Analysis version (that allows conclusions concerning the used vehicle database)
- Detailed information on used TTB vehicles: all released TTB add-on vehicles are listed here once. You can find display name, blueprint path and a list stating which add-on is delivering which vehicle. The table can be sorted for each column. Installed vehicles are marked green. Missing ones are marked red.

Changing the window size:

As more and more screens with large resolutions, in particular UHD monitors, are being used, there was a desire to be able to enlarge the small program window. The first possibility is offered in the **settings.ttb** option file, which is created after the first program run. This can be opened and changed with a text editor. A zoom factor is specified in the **fourth line**, which is 1 by default (= 100%), but can be increased as required.

Legal information (German)

Der folgende Lizenzvertrag wird mit Benutzung der Dateien automatisch anerkannt (auch wenn dieser nicht gelesen wurde):

Das Programm "Szenario-Analyse" unterliegt Copyright-Bestimmungen, die vom Autor bestimmt werden und zu beachten sind. Sämtliche Nutzungen, die über die private Nutzung hinausgehen, sind ohne die schriftliche Einverständnis des Autors nicht gestattet! Bei Zuwiderhandlungen behält sich der Autor rechtliche Schritte vor.

Das Bereitstellen auf anderen als vom Autor ausgesuchten Webseiten ist nicht ohne die schriftliche



Einverständnis des Autors gestattet. Bei Zuwiderhandlungen behält sich der Autor rechtliche Schritte vor.

Die nichtkommerzielle Weitergabe des KOMPLETTEN Downloadarchivs auf privater, nichtöffentlicher Basis ist erwünscht. Dabei darf das Archiv NUR im Originalzustand (inklusive ReadMe) weitergegeben werden.

Für eventuell entstehende Schäden an Hard- und/oder Software kann der Autor keine Verantwortung übernehmen. Die Benutzung erfolgt auf eigene Gefahr!

Weder der Autor, noch TrainTeamBerlin haften für inhaltliche Irrtümer.